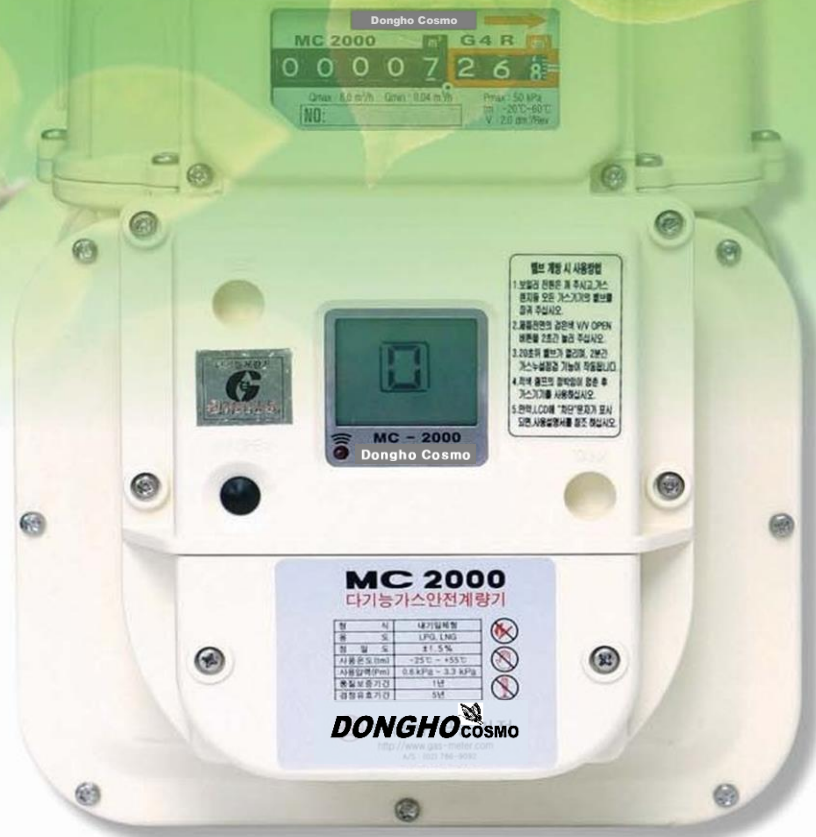
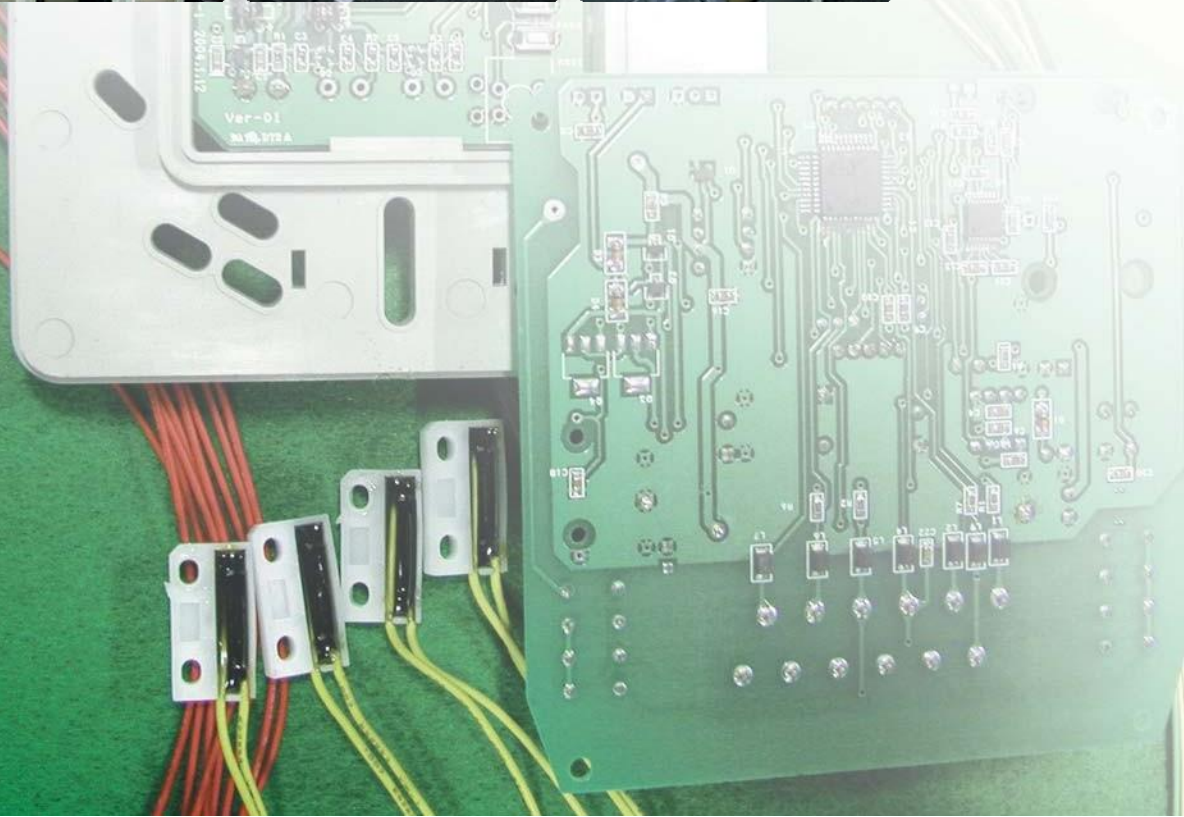


Micom Gas meter



DONGHO  **COSMO**

**Best Quality
Best Satisfaction, Best Price
& On Time**



● Characteristic of Gas meter

▶ Acquired Certificate of Type approval Gas meter(G1.6, G2.5, G4, G6)

- These gas meters(G1.6, G2.5, G4, G6)meet the recommendation of OIML standard and are suitable for residential, commercial and industrial applications.

▶ With excellent performance, gas resistance and durability

- It eliminates noise and locking problems during the cold season by applying engineering plastics, special valves and valve seats.
- The diaphragm made of gas resistant materials ensures excellent performance and durability because it does not contract by change of temperature.

▶ Applied the riveting method for connecting rotary lever.

- Applied the riveting method for connecting rotary lever by using engineering plastics instead of soldering for the first time in our country to improve pressure loss and obtain stable accuracy and reliability.

▶ Introduction of Gas meter

- **General Type of Gas meter** – It meets the recommendation of OIML standard and is suitable for residential, commercial and industrial applications.
- **Remote Type of Gas meter** – With a built-in device to produce digitalized electric signals as per a certain amount of gases, remote reading is available.
- **Micom Gas Meter** – It's a high-tech digital gas safety gauge used world-wide, which composes a micro-computer internal gas meter gauge so that it can immediately sense the danger of gas explosions caused by earthquakes or other reasons and intercept the gas leakage by peration an internal cut off valve, and display the interception reason on LCD to help rapid management.

■ FUNCTIONS OF MICOM GAS METER - MC2000



1. Occurrence of Gas leakage, immediate Gas Interception

When there's Gas leakage by natural calamities or carelessness, it can cut off gas valve immediately judging by itself to ensure safety



5.Rapid and precise Gas Interception by phone

It can intercept gas leakage whenever, wherever by phone or modem. Rapidly & precisely



2. Gas inspection for 24 hours

It examines gas leakage, pressure, time used, and amount used with digital sensor for 24 hours



6. Compulsion fastening fuction

It's a built-in safety meter with a compulsion fastening function so that it is impossible to use illegally without permission



3. Easy and exact display of various functions

It can rapidly and precisely display nearly 20 safety functions in LCD



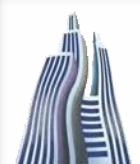
7. Remote indication and measuring function

It can digitally input/output the current state in detail, such as gas cut-off, and it can perform remote control and apply to home-automation system



4. Simple construction, Simple leakage examination

It's a Built-in type safety meter with various function-related gas safety gauges; It's simple to construct and examine gas leakage



8.Earthquake perception fastening function

When there is gas leakage caused by strong earthquakes of five points on the seismic intensity, it is intercepted automatically

MICOM GAS METER G2.5

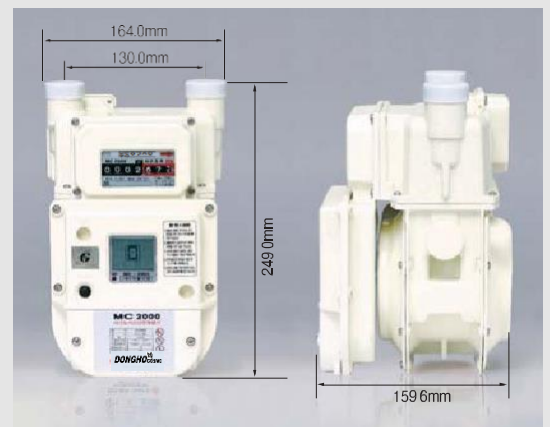
TYPE APPROVAL NO. H-05-08



PRODUCTION SPECIFICATION

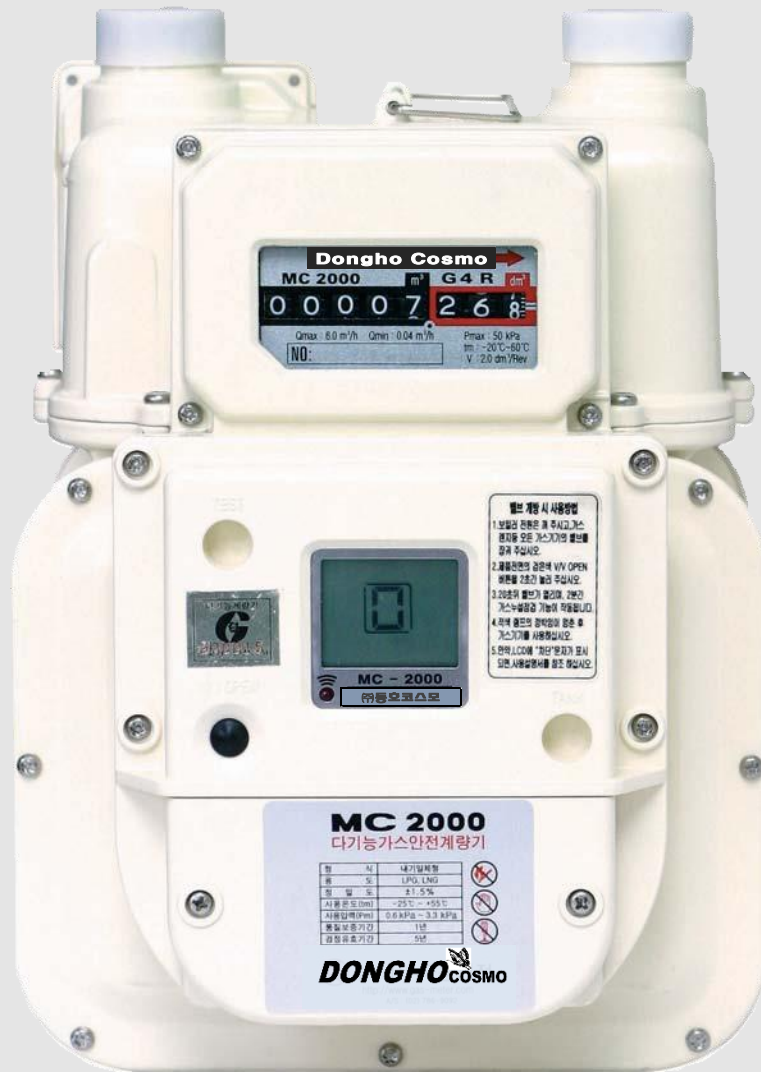
MODEL	G 2.5	
Qmax (m³/h)	4.0	
Qmin (m³/h)	0.025	
Pmax (kPa)	10 (1000mmH ₂ O)	
V (dm³/Rev)	1.2	
Inlet/Outlet Port distance	130	
Inlet/Outlet Port Screw Dim.	M34x1.5P	
Close Function	Flow close	1. Aggregate flow interception 2. Rapid flow increase interception 3. Time limit over interception 4. First gas leakage inspection and interception
	etc.	1. Sensor operation interception 2. Warning operation interception 3. Pressure abnormality interception 4. Compulsory interception 5. External gas connection interception 6. Tank exchange interception
Warning Function	1. A very small amount of leakage warning function 2. Warning function of low battery voltage 3. Warning function cause of abnormal interception 4. Warning function cause of abnormal Pressure	
Battery	Lithium Ion Battery DC3.6V	
Weight(Kg)	3.1kg	
Applicable Gases	LNG, LPG	

DIMENSION



MICOM GAS METER G4

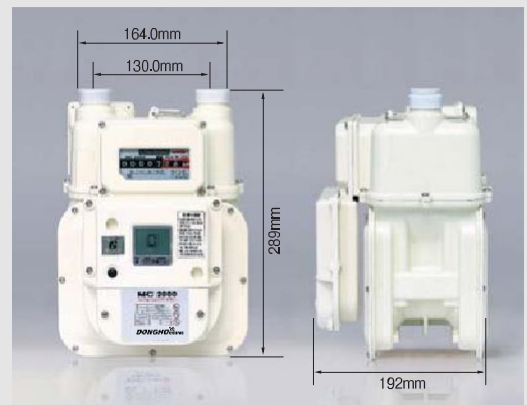
TYPE APPROVAL NO. H-05-19



PRODUCTION SPECIFICATION

MODEL	G 4	
Qmax (m³/h)	6.0	
Qmin (m³/h)	0.04	
Pmax (kPa)	10 (1000mmH ₂ O)	
V (dm³/Rev)	2.3	
Inlet/Outlet Port distance	130	
Inlet/Outlet Port Screw Dim.	M34X 1.5P	
Close Function	Flow close	1. Aggregate flow interception 2. Rapid flow increase interception 3. Time limit over interception 4. First gas leakage inspection and interception
	etc.	1. Sensor operation interception 2. Warning operation interception 3. Pressure abnormality interception 4. Compulsory interception 5. External gas connection interception 6. Tank exchange interception
Warning Function	1. A very small amount of leakage warning function 2. Warning function of low battery voltage 3. Warning function cause of abnormal interception 4. Warning function cause of abnormal Pressure	
Battery	Lithium Ion Battery DC3.6V	
Weight(Kg)	5.0kg	
Applicable Gases	LNG, LPG	

DIMENSION



HOUSEHOLD GAS METER

Multi function Gas Safety Meter

MC2000



Interception function

Aggregate flow interception

Gas supply interception and perception of amount of gas leakage cause of natural and carelessness of users



Interception of increased flux

Automatic interception when gas flux increased rapidly cause of a damage in gas equipment/Pipe lying



First gas leakage inspection and interception

When users forget the fastening gas equipment and supply gas at first, sense the internal leakage and intercept



Low pressure interception function

Interception function when supplied gas pressure is in low abnormally



Compulsion interception function of gas supply

Interception function when consumer is in case of emergency



External & CO sensor connection interception function

When there is CO sensing signal, as external gas sensor is being connected, the gas supply is to be intercepted automatically



Gas tank exchange interception

Interception function in the case of exchange of gas tanks



External gas sensor connection interception function

When there is gas leakage sensing signal, as external gas sensor is being connected, the gas supply is to be intercepted automatically



When used time is exceeded, automatically intercepted

During using gas equipment forgetting the fire extinguishing and operating long time, it functions of interception to prevent from overheating fire



Automatic interception function when there's an earthquake

When there is a specific degree earthquake intensity, and sensed gas leakage, it's intercepted automatically



Warning function

A very small amount of leakage warning function

The function to perceive a very small amount of leakage, which is hard to be sensed artificially but continuously



Warning function of low battery voltage

The function to warn in the case of internal battery voltage lower (From before 40 days)



Warning function cause of abnormal interception

The function to warn the instability of level there is still a perception of gas leakage though interception



External connection & other function

Connectable function of remote inspection system

Function to output 1 pulse per 10 liter to connect inspection system and a remote indication gauge

Function to disconnect a remote communication

Function of intercepting from a distance with a remote telecommunication system such as modem



Function of gastering gas supply by compulsion

Function of prohibiting a person from using without permission of gas supplier



Pilot lamp registration function

When using gas-fired boiler function that register pilot lamp at use



Normalcy use state indication function

Function that mark that gas is used normally



- Gas safety 119, MC 2000
- Designed by international standard, production and quality control- ISO9001 certification
- Safety gas meter with multi-function display device inside- Register of utility model No.0353597
- Meta control method with fastening function system-patent No.0439158



GAS METER G1.6

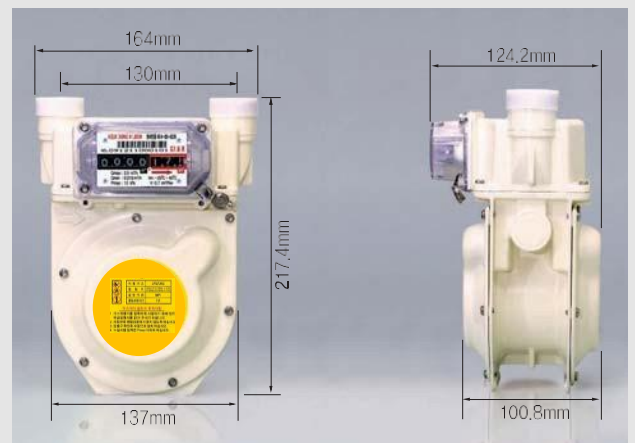
Type approval No. H-05-03



PRODUCTION SPECIFICATION

MODEL	G1.6
Qmax (m³/h)	2.5
Qmin (m³/h)	0.016
Pmax (kPa)	10 (1000mmH ₂ O)
Volume per 1 Rev	0.7ℓ /rev
Max indication volume(m³)	9999.999
Min indication volume	0.2ℓ
Accuracy	Qmin ≤ Q < 0.1Qmax : ±3%, 0.1Qmax ≤ Q ≤ Qmax : ±1.5%
Inlet/Outlet Port location	Inlet : left side, Out let : Right side
Inlet/Outlet Port distance	130
Inlet/Outlet Port Screw Dim.	M34 × 1.5P
Normal operating Temp	- 20 ~ +60
Weight(Kg)	1.61kg
Applicable Gases	LNG, LPG

DIMENSION



GAS METER G2.5

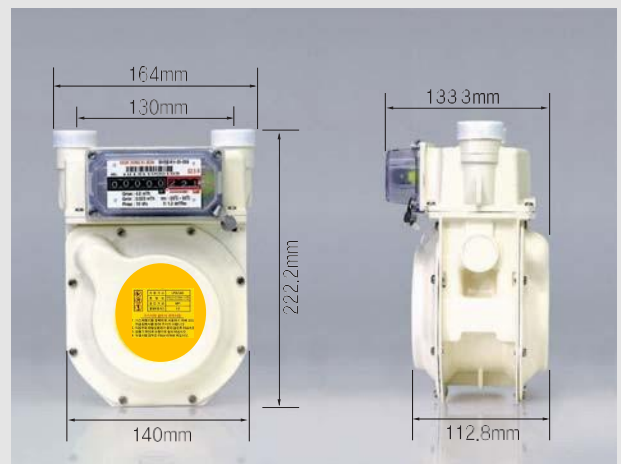
Type approval No. H-05-09



PRODUCTION SPECIFICATION

MODEL	G2.5
Qmax (m³/h)	4.0
Qmin (m³/h)	0.025
Pmax (kPa)	10 (1000mmH₂O)
Volume per 1 Rev	1.2ℓ /rev
Max indication volume(m³)	99999.999
Min indication volume	0.2ℓ
Accuracy	Qmin ≤ Q < 0.1Qmax : ±3%, 0.1Qmax ≤ Q ≤ Qmax : ±1.5%
Inlet/Outlet Port location	Inlet : left side, Out let : Right side
Inlet/Outlet Port distance	130
Inlet/Outlet Port Screw Dim.	M34 × 1.5P
Normal operating Temp	- 20 ~ +60
Weight(Kg)	1.77kg
Applicable Gases	LNG, LPG

DIMENSION



GAS METER G4

Type approval No. H-05-18



PRODUCTION SPECIFICATION

MODEL	G4
Qmax (m³/h)	6.0
Qmin (m³/h)	0.04
Pmax (kPa)	50 (5000mmH ₂ O)
Volume per 1 Rev	1.2ℓ /rev
Max indication volume(m³)	99999.999
Min indication volume	0.2ℓ
Accuracy	Qmin ~ 3Qmax : ±3%, 0.1Qmax ~ Qmax : ±1.5%
Inlet/Outlet Port location	Inlet : left side, Out let : Right side
Inlet/Outlet Port distance	130
Inlet/Outlet Port Screw Dim.	M34×1.5P
Normal operating Temp	-20 ~ +60
Weight(Kg)	1.77 kg
Applicable Gases	LNG, LPG

DIMENSION



GAS METER G6

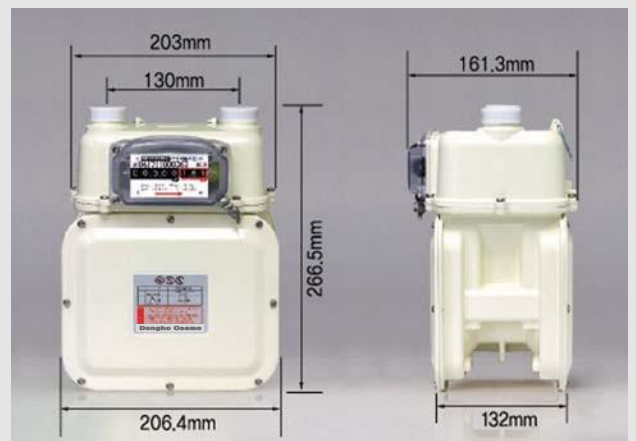
Type approval No. H-07-04 (G6 with span 130mm)



PRODUCTION SPECIFICATION

MODEL	G6	
Qmax (m ³ /h)	10	
Qmin (m ³ /h)	0.06	
Pmax (kPa)	50 (5000mmH ₂ O)	
Volume per 1 Rev	2.3ℓ /rev	
Max indication volume(m ³)	99999.999	
Min indication volume	0.2ℓ	
Accuracy	Qmin ~ 3Qmax : ±3%, 0.1Qmax ~ Qmax : ±1.5%	
Inlet/Outlet Port location	Inlet : left side, Out let : Right side	
Inlet/Outlet Port distance	130	
Inlet/Outlet Port Screw Dim.	M34X 1.5P	PF 1 1/4
Normal operating Temp	- 20 ~ +60	
Weight(Kg)	1.77kg	
Applicable Gases	LNG, LPG	

DIMENSION





G1.6

G2.5

G4

G6

GAS METER SERIES OF REMOTE TYPE GAS METER

Remote Indicator

Characteristic

1. Exact Metering

Remote reading via wireless two-way digital communication and home-networking technology realizing digital home ensure accurate metering. It indicates the accumulated value precisely without error by reading electric pulses through the microprocessor and LCD. This helps prevent any troubles in advance that may take place between gas companies and customers.

2. Extended Usage Hours through Optimized Electric Current

Usage hours are extended due to reduced power consumption. It can be used for a longer period of time because it consumes almost no electric power by turning into sleep mode after it processes electric pulses from a metering device.

3. Metering Valve Memory Function

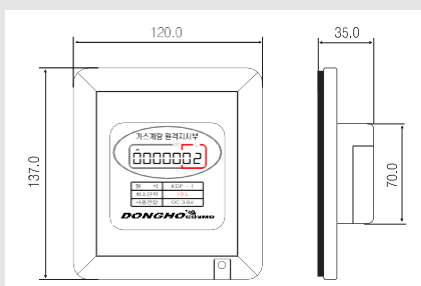
It stores the metering values displayed on LCD in the EEPROM, and keeps the data even in case of power failure.



Specifications

Detail	Model	KDP-1	KDP-2
Min Flow Rate Accumulating		0.01 m ³	0.1 m ³
Max. Flow Rate Accumulating		99999.99 m ³	999999.9 m ³
Normal Operating Voltage		Litium Battery 3.6V	
Normal operation Temp.		-25 °C ~ +60 °C	
Pulse Recognition Interval		Over 0.3 Sec.	

Dimensions



Handling & Installation

▶ Places for Installation & Cautions for Cabling

- Select places for easy checks and inspections and keep enough working space
- Avoid the exposure to the areas of high humidity, direct sunligh, vibration, and dust
- Install the inner box to protect the indicator
- Install the cable tubes to protect the cable between the indicator and the meter

▶ Cautions for Installatio

- Read the installation guidelines carefully for wiring
 - Use 2P(Tin #24) for the indicator tin cable in black and white color
- Use the cable tubes to protect the cable
- Be careful of incidental breakdown due to wrong operations.
- Do not disassemble or repair for the indicator with quality failure
- Seal the indicator after the installation

▶ Handling

- Transport the indicator in a box to protect possible damage
- Avoid the impact during transporting and handling
- Do not give an impact to the LCD of the indicator